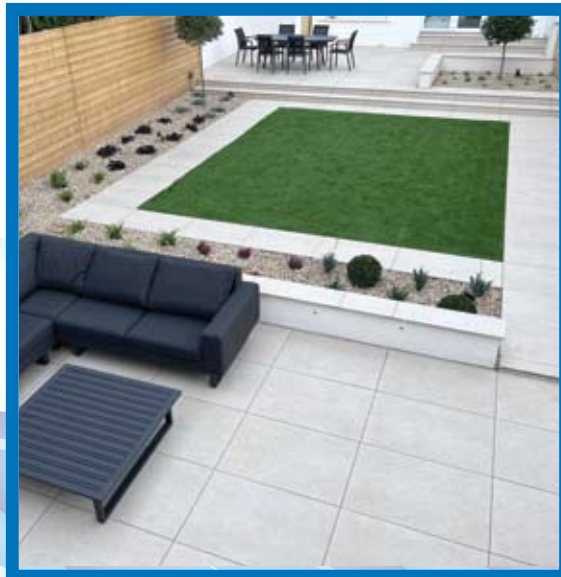


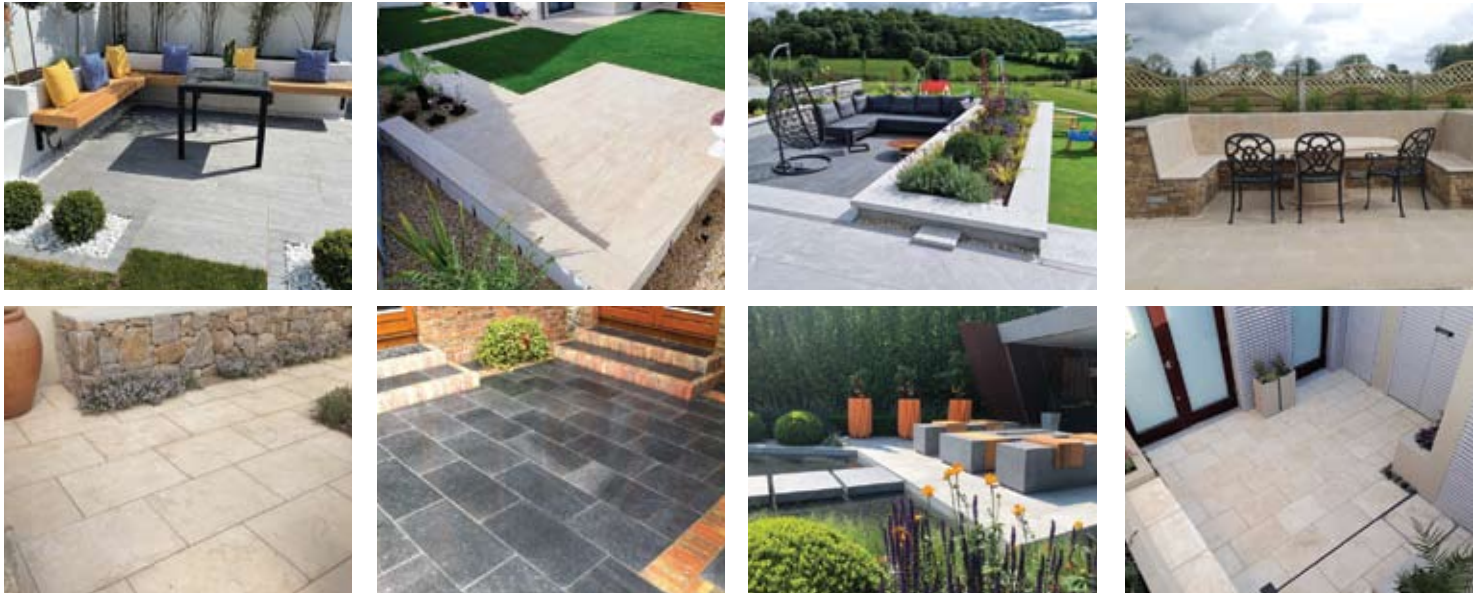
Natural Stone Yard

patio paving suppliers



Web: www.naturalstoneyard.ie

natural stone yard



Recent projects with paving supplied by Natural Stone Yard.

Delivery service - Monday to Friday, Leinster area only.

Delivery Rates:

Delivery rates vary on distance and will be quoted on request.
Guideline of rates available in office.

Truck size:

Our trucks that deliver the goods are the approx. size of a standard dustbin lorry.
Are there access problems to your property? If yes, goods will only be dropped to your roadside or pathway.

Delivery times:

If you choose to avail of our delivery service only a day will be promised for delivery meaning any time from 7.30am - 6.00pm. Any deviation ie: am if possible or pm if possible is purely a gesture to try and accommodate specific requirements and absolutely no guarantee. Please understand this is to help us run our delivery service as efficiently as possible for you the customer.

Crane offloading:

Products can only be placed within the limitations of the crane. Under no circumstances will the driver crane products over vulnerable areas ie: cars, garages or fences etc.

*** If the above does not meet your requirements please feel free to organise your own transport for delivery or collection.**

The Management.



RETURNED PRODUCTS:

Natural Stone Yard would recommend for you to accurately measure on site before ordering materials, if in doubt underestimate. We often find that dimensions used for the initial project are significantly changed on site.

Natural Stone Yard do not accept returns on any materials ie. (Paving, Chippings, Grout, Kerbs, Building Stone, Cobbles etc) Natural Stone Yard do not accept excess quantities of over ordered materials or where a customer simply changes their mind. Non-Negotiable.

NOTE: MEASURE TWICE, ORDER ONCE, NO RETURNS.

CONTENTS

www.naturalstoneyard.ie

Natural Stone Paving & Outdoor Porcelain Tiles

Limestone Paving & Products

Granite Products

Outdoor Porcelain Tiles

Indian Sandstone Paving & Products

Antique Vintage Indian Paving

P1-4



P5-6



P7-10



P11



P12



Decorative Stone

Slate Mulch

Decorative Chippings

Decorative Pebbles

Decorative Cobbles

P13



P13



P13



P13



Installation Of Decorative Stone

P14



Building Material

P15



Recessed Manhole Covers

P16



Channel Drain and Brick Slot Drain

P17



Other Products

P18



Ecco Gravel - Gravel Stabilising System

P19



Natural Building Stone

P20



Installation Of Paving Slabs

P21



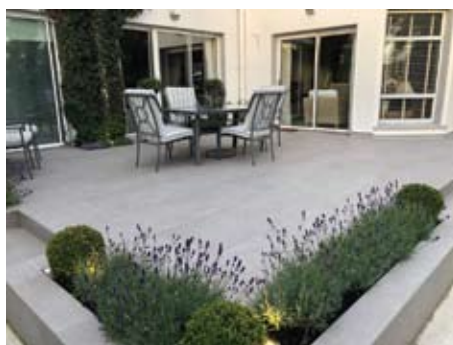
Installation Guide Of Outdoor Porcelain Tiles

P23



General Information / Terms & Conditions

P24



Recent projects with paving supplied by Natural Stone Yard

LIMESTONE

www.naturalstoneyard.ie

Note: We strongly recommend for you to seal your selected paving.



Menya Egyptian Limestone Paving

Note : Egyptian Limestone must be sealed during installation.



Menya Egyptian Limestone Step

Note : Egyptian Limestone must be sealed during installation.



Sinai Pearl 20x10

Egyptian Limestone Cobble

Note : Egyptian Limestone must be sealed during installation

LIMESTONE

www.naturalstoneyard.ie

Note: We strongly recommend for you to seal your selected paving.



Sinai Pearl Egyptian Limestone Paving

Note : Egyptian Limestone must be sealed during installation



Vintage Tandoor Yellow Limestone Cobbles

Available in 20x10x5cm

LIMESTONE

www.naturalstoneyard.ie

Note: We strongly recommend for you to seal your selected paving.

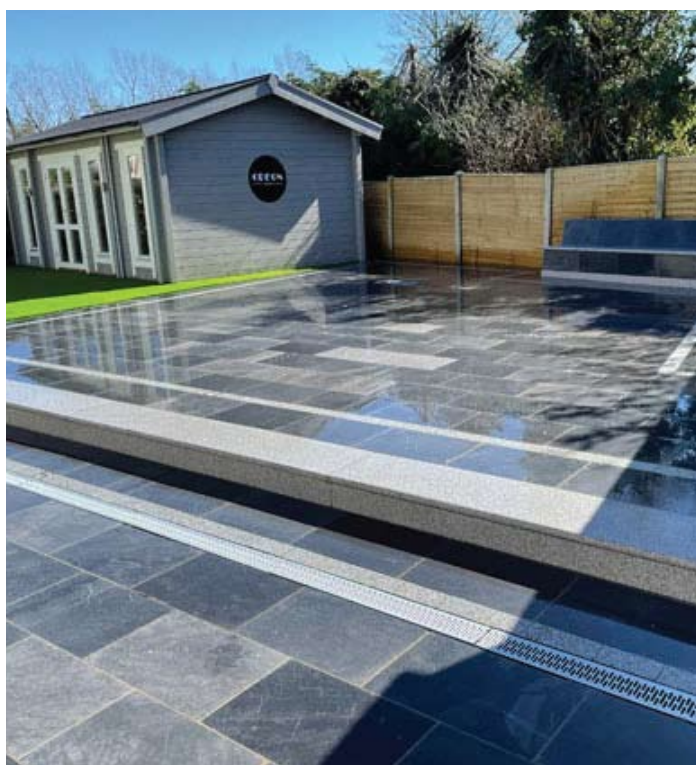


Sofitel Blue Limestone Paving



Black Limestone Tumbler

Suitable for Patios & Pathways Size :15x15x2.5cm



Saigon Blue Limestone Paving



Kota Blue Limestone Tumbler

Suitable for Patios & Pathways Size :15x15x2.5cm

LIMESTONE

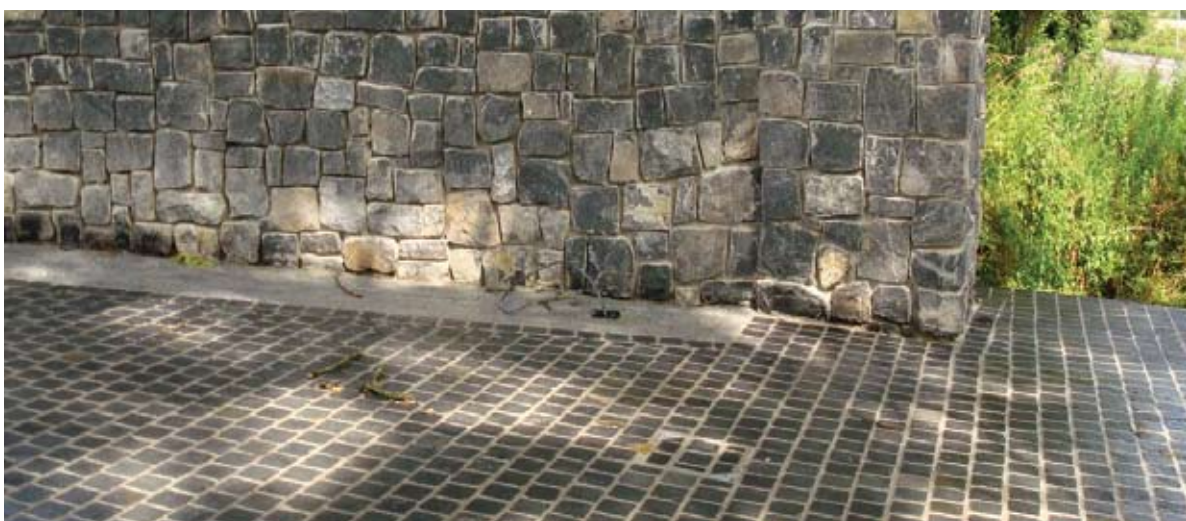
www.naturalstoneyard.ie

Note: Whilst the colours reproduced in this brochure are as accurate as photographic & printing process allow, it is essential your choice of goods are made from the actual material from Natural Stone Yard



Vintage Tandoor Blue Limestone Cobble

Available in 10x10x5cm & 20x10x5cm



Black Limestone Cobble

Available in 10x10x5cm & 20x10x5cm

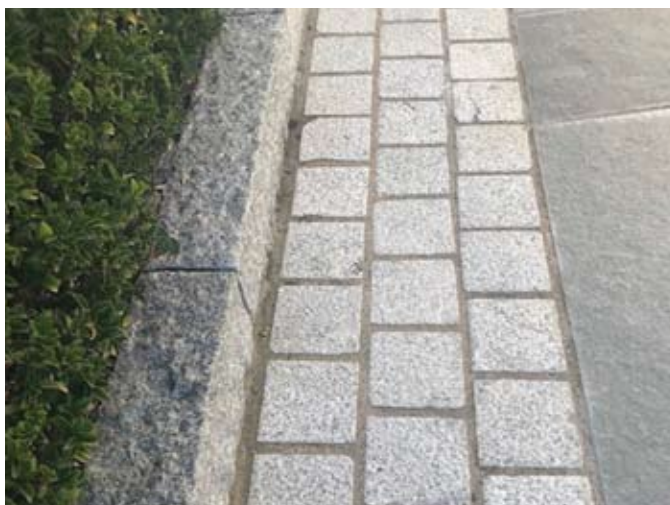


Saigon Blue Limestone Cobble

Available in 10 x 10 x 5cm & 20 x 10 x 5cm

GRANITE

www.naturalstoneyard.ie



Portuguese Grey Granite Cobbles

Available in size: 10 x 10 x 5cm



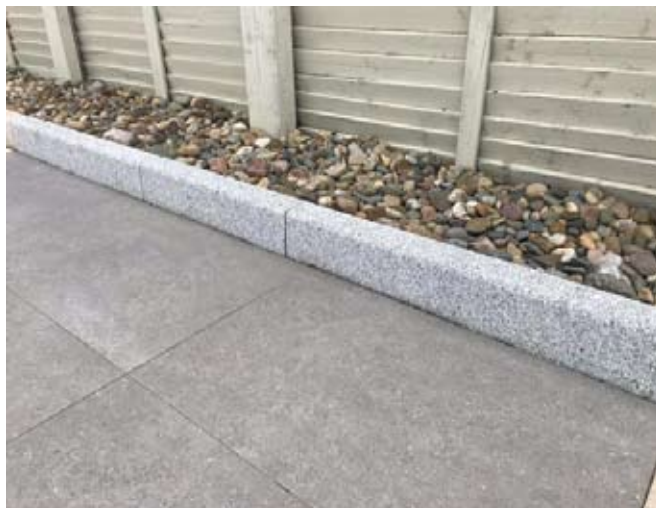
Portuguese Grey Granite Cobbles

Available in size: 20 x 10 x 5cm



Portuguese Grey Granite Chamfered Kerbstone

Available in size: 50 x 15 x 10cm



Portuguese Grey Granite Chamfered Kerbstone

Available in size: 100 x 15 x 10cm



Silver Grey Granite Step & Riser

Front of step with Bullnose Finish.



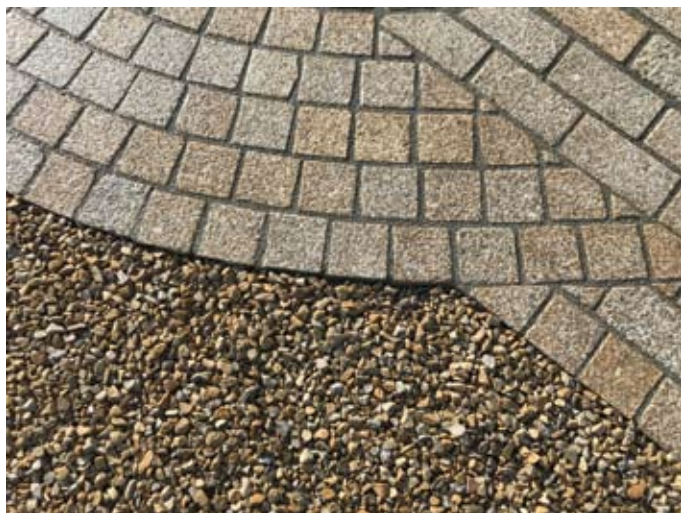
Silver Grey Granite Step & Riser

Front of step with Bullnose Finish.

GRANITE

www.naturalstoneyard.ie

Note: Whilst the colours reproduced in this brochure are as accurate as photographic & printing process allow, it is essential your choice of goods are made from the actual material from Natural Stone Yard



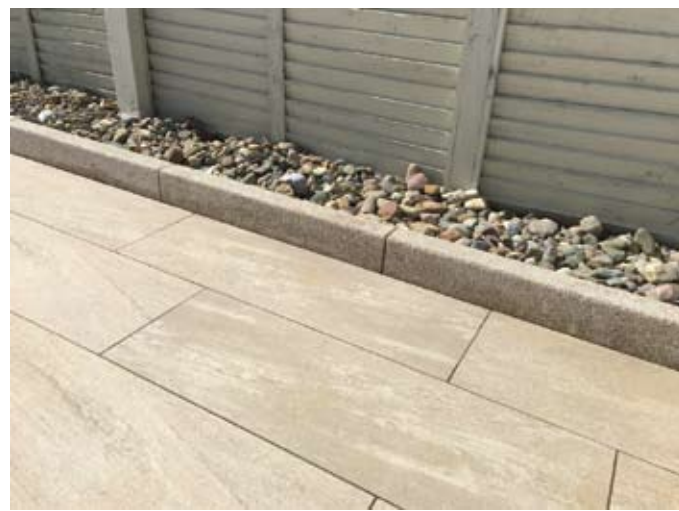
Portuguese Gold Granite Cobbles
10x10x5cm



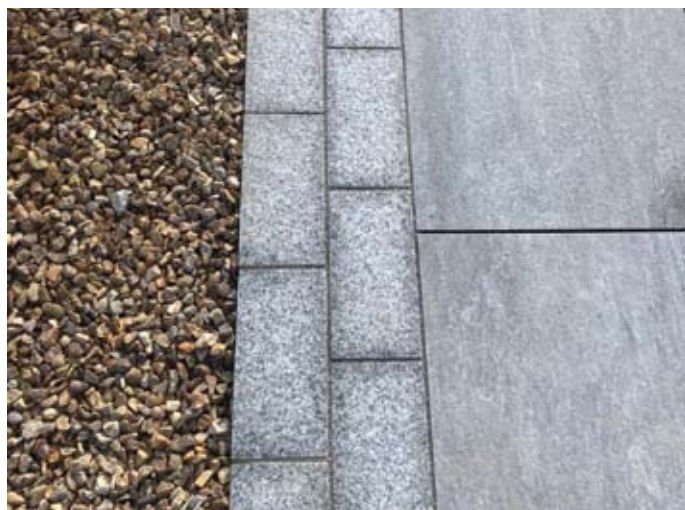
Portuguese Gold Granite Cobbles
20x10x5cm



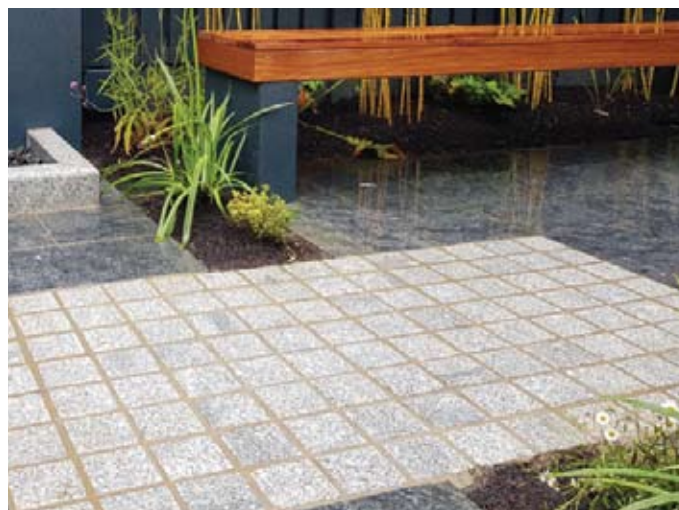
Portuguese Gold Granite Chamfered Kerbstone
50x15x10cm



Portuguese Gold Granite Chamfered Kerbstone
100x15x10cm



Flamed Silver Granite Cobble
20x10x4cm



Flamed Silver Granite Cobble
10x10x4cm



Find us on
Facebook 06

Important: All images are intended as guides only, both Porcelain Outdoor Tiles & Natural Stone do vary in shade from batch to batch.

Premium Italian Outdoor Porcelain Tiles

Unique Characteristics Of Italian Porcelain

Low Maintenance , Slip Resistant, Rectified ,Exact Profile Thickness, Frost Proof and Scratch Resistant.



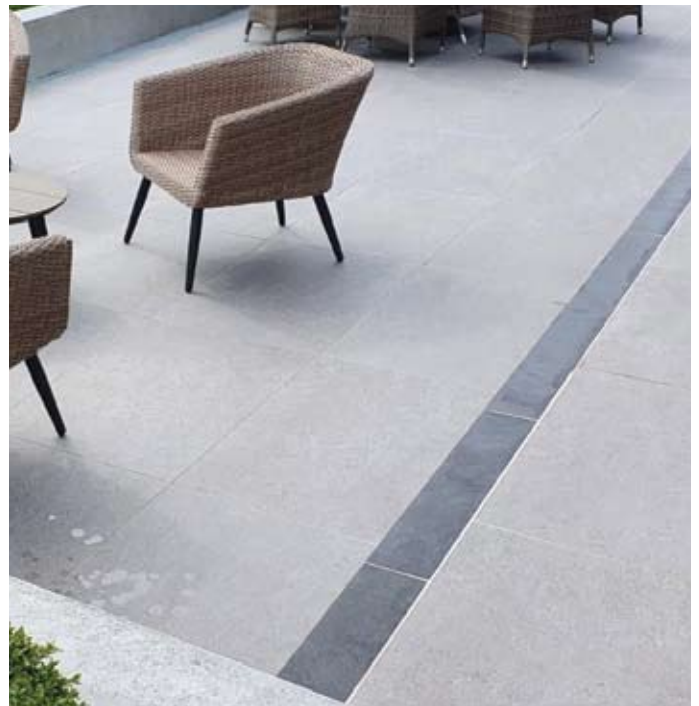
Grigio Grey Porcelain



Portland Ice Porcelain



Cervino Beige Porcelain



Pietra Portland Londra Porcelain

PORCELAIN

www.naturalstoneyard.ie

Important: All images are intended as guides only, both Porcelain Outdoor Tiles & Natural Stone do vary in shade from batch to batch.



Vals Silver Porcelain



Urban Stone Beige Porcelain



Bluestone Noir Porcelain



Silver Granite Effect Porcelain

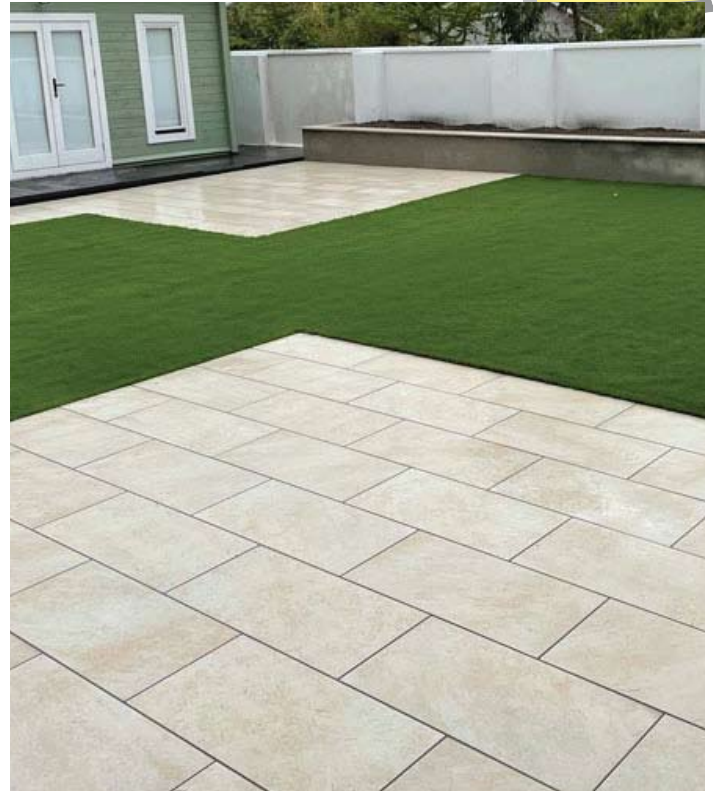
PORCELAIN

www.naturalstoneyard.ie

Important: All images are intended as guides only, both Porcelain Outdoor Tiles & Natural Stone do vary in shade from batch to batch.



Urban Stone Grey Porcelain



Modena Beige Porcelain



Vals Cloud Porcelain



Fortezza Diorite Porcelain

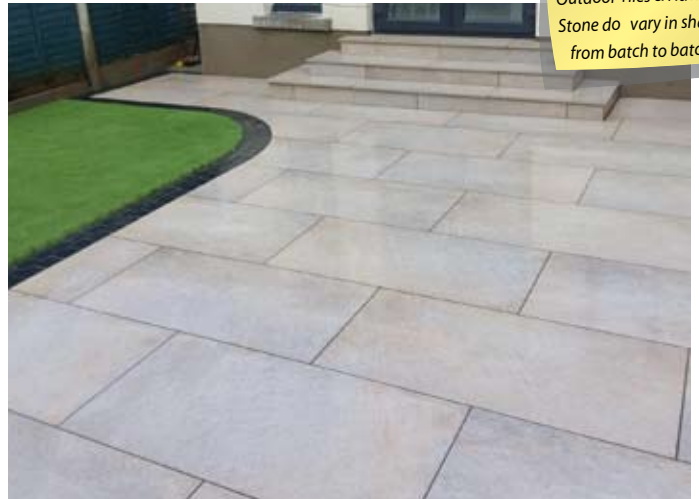
PORCELAIN

www.naturalstoneyard.ie

Important: All images are intended as guides only, both Porcelain Outdoor Tiles & Natural Stone do vary in shade from batch to batch.



Regale Ostana Porcelain



Regale Elva Porcelain



**Quarzo Grey Porcelain
Wall Cladding**



**Quarzo Steel Porcelain
Wall Cladding**



Marmi Black Porcelain Wall Cladding



White Marble Chippings & White Cobbles
always available to compliment porcelain to perfection

INDIAN SANDSTONE

www.naturalstoneyard.ie

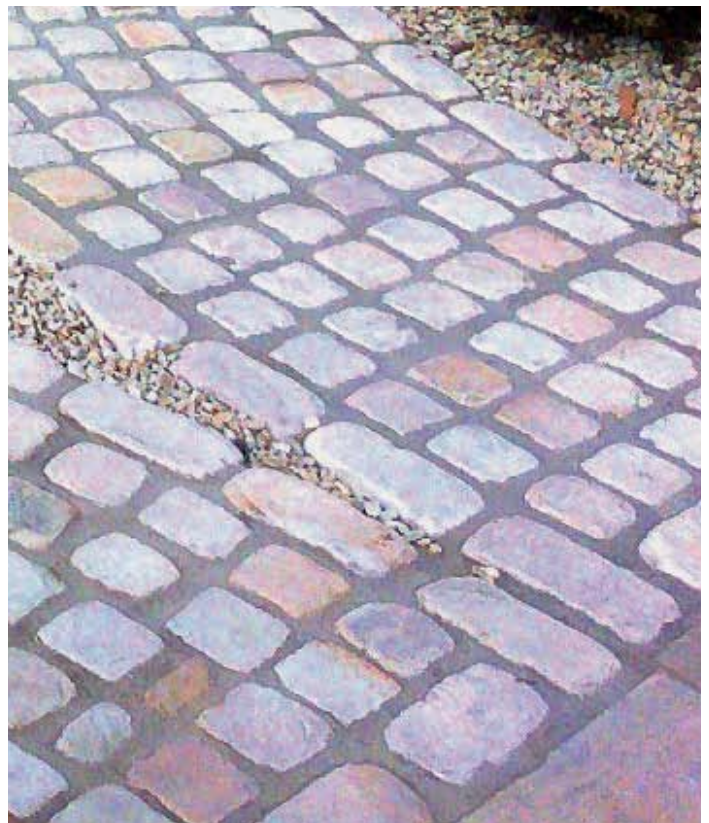
Note: Whilst the colours reproduced in this brochure are as accurate as photographic & printing process allow, it is essential your choice of goods are made from the actual material from Natural Stone Yard



Cameldust Sandstone Paving



Cathedral Grey Limestone Paving



Tumbled Mint Sandstone Cobbles
Available in 10 x 10 x 5cm & 20 x 10 x 5cm

ANTIQUE VINTAGE INDIAN PAVING

www.naturalstoneyard.ie

Note: Whilst the colours reproduced in this brochure are as accurate as photographic & printing process allow, it is essential your choice of goods are made from the actual material from Natural Stone Yard



**Antique Vintage
Tandoor Yellow Limestone Paving**



**Antique Vintage Tandoor Blue
Limestone Paving**



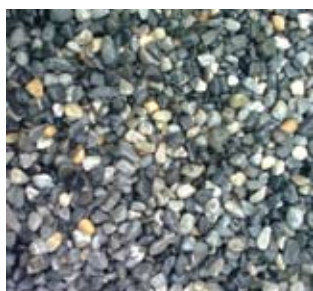
Antique Vintage Mint (Sahara) Sandstone Paving

Decorative Stone

Decorative Natural Stone Aggregates can transform your flowerbed ,to your garden, to your driveway in no time at all, providing year – round colour and suppressing weed growth, all you need to do is use your imagination.

Please Note : Bulk stone is washed using equipment at the quarry and usually requires cleansing to reveal its full natural colours. When used for a pathway, driveway, or flowerbed rainfall will normally achieve this or simply you can run a hose to clean the stone of dust.

Reminder : Don't forget your weed block , keep weeds at bay with this innovative heavy duty weed control fabric , suitable for use under chippings , pebbles and grits on pathways and in flowerbeds. Available @ Natural Stone Yard.



Ocean Blue 20mm



Beach Pebble 20mm



Carling Stone 20mm



Shannon Gold 14mm or 20mm



Stone Mulch 25mm to 40mm



Pink Quartz 20mm



Gold Quartz 14mm or 20mm



Pink Granite 10mm or 20mm



Large Brown Shingle 20mm



Plum Slate Mulch 40mm



Silver Granite 14mm



Small Brown Shingle 10mm



Beach Cobbles 50mm



White Cobbles 150-200mm

As a guideline the average coverage per tonne sack is approx. 12m² @ 40mm depth.

Getting ready to lay your decorative stone

Q. How much decorative stone will I need?

A. This will depend on your required depth.

- Guideline:**
1. Coverage per tonne of decorative stone
Approx. 10sq mtr @ 2inch depth (50mm)
Approx. 13sq mtr @ 1 ½ inch depth (35mm)
 2. Coverage per tonne of crushed stone hardcore (804)
Approx. 10sq mtr @ 3 inch depth (75mm)
 3. Coverage per tonne of underlay dust (grit)
Approx 25sq mtr @ ¾ inch depth (20mm)

Q. What size of decorative stone will I need?

A. This will depend on the intended use of the area.

1. On a flowerbed, whatever size you like
2. On a pathway, we would recommend 10mm to 20mm
3. On a driveway, we would recommend 14mm to 20mm

Ground Preparation for installation of decorative stone

1. On a flowerbed

- A. Remove all weeds & grass from the planting area
- B. Add topsoil to planting area
- C. Roll out paveway textile (mypex) on top of planting area
- D. Cut xs through paveway textile which to place plants
- E. Cover with decorative chippings enough to cover textile
- F. Job complete

2. On Pathway

- A. Remove soil to a depth of approx. 4 inches (100mm)
- B. Spread crushed stone hardcore to a depth of approx. 2 inches (50mm)
- C. Compact with a whackerplate
- D. Spread underlay dust to a depth of approx ¾ inch (20mm)
- E. Add decorative stone to surface area & spread to a depth of approx. 1 ½ inches (35mm)
- F. Rake through
- G. Job complete

3. On Driveway

- A. Remove soil to a depth of approx. 6 inches (150mm)
- B. Spread crushed stone hardcore to a depth of approx. 4 inches (100mm)
- C. Compact with a whackerplate
- D. Add underlay dust to a depth of approx. ¾ inches (20mm)
- E. Then add decorative stone to surface area & spread to approx. 1½ inch depth (35mm)
- F. Rake through
- G. Job complete



Building Material required on some projects also available @ Natural Stone Yard



25kg Cement



Hardcore



Sand



Concrete Batch Gravel



40mm Drainage Stone



Pea Gravel



Grey Underlay Dust



Gold Underlay Dust



4 inch Solid Concrete Blocks



9 inch Cavity Blocks

RECESSED MANHOLE COVERS

www.naturalstoneyard.ie

Recessed Manhole Covers (AJS)

Available in 4 Sizes : 30 x 30 x 6cm 60 x 60 x 6cm
 30 x 30 x 9.5cm 60 x 60 x 9.5cm

Don't want an eyesore to take away from your project, then add the finishing touch to your driveway or patio with a recessed manhole cover (AJ) , also lifting handles available , guaranteed to complete a job to perfection.



Empty Recessed Manhole Cover



Recessed Manhole Cover Used Within a Landscape Project



New Treated Timber Sleepers
Size : 240 x 20 x 10cm

Jointing Products (Grout)

Various jointing products available for different applications.



A-Joint Ready



Ultra Scape Flowpoint
Exterior Grout
For Paving & Tiles (Trade)



Botament Multifuge Base
Exterior Tile Grout
For Porcelain Tiles

Visit our website www.naturalstoneyard.ie for further information on Jointing Products Above.

CHANNEL DRAIN & BRICK SLOT DRAIN

www.naturalstoneyard.ie

Plastic Drainage Channel with Galvanised Grating

A complete surface water drainage system.

Channel drain systems are efficient, lightweight and easy to install.

Channel drain systems are an effective and popular solution when perimeter drains are needed for hardscaped areas to remove large amounts of water. Common applications include patios, private driveways, play areas, walkways, courtyards, athletic fields, tennis courts, and in front of garage doors.

Size - 1000x135x110mm (LxWxH)

Galvanised narrow slot grating : 6mm

Galvanised grating : 1000x123x20mm (LxWxH)

Designed to withstand 5 tonne vehicle weight.

Heel Guard – 6mm

Dual purpose End Cap – Also available



Channel Drain

Channel Drain in a Patio



Brick Slot Drainage Channel

Brick Slot Drainage Channel provides a discreet slot drainage system for slab and block paving installation.

Brick Slot Drainage Channels clip together for easy installation.

Off set slots enable drainage location adjacent to walls and doors thresholds.

The 10mm slot bends in with the paving joints giving an aesthetic solution.

Cover compatible with up to and including 60mm deep block paving.

Size: 1000 x 120 x 140mm (L x W x H)

Brick slot corner inspection unit also available for maintenance access.

Brick slot end cap also available.



Brick Slot Drain

Brick Slot Drain in a Patio



OTHER PRODUCTS AVAILABLE AT NATURAL STONE

www.naturalstoneyard.ie



Topsoil

Topsoil is screened using a mesh sieve to remove large stones, lumps and other unwanted material. This produces an excellent consistency in the top soil - making it easier to work with than regular soils. Available in tonne sack bags only.

Suitable for application with:

- flower and shrub beds.
- roll out turf grass.
- grass seed



Bark Mulch

Bark Mulch is an ideal ground cover for long lasting weed control in flowerbeds and borders. Bark Mulch improves soil moisture, keeping plants hydrated during dry periods. Bark Mulch is a natural product and will compliment any landscape project. Available in tonne sack bags.



Botament Multistone Adhesive

Exterior Adhesive
for Porcelain Tiles



Botament Multifuge Base

Exterior Tile Grout
For Porcelain Tiles



Botament D11

Primer for Porcelain Tiles

Weed Suppression Fabric:

Keep weeds at bay with this innovative heavy duty weed control fabric, suitable for use under chippings, pebbles and grits on pathways and in flowerbeds.

Cleaners :

Specialised Cleaners for sandstone, granite, limestone, travertine

Sealers :

Specialised Sealers for sandstone, granite, limestone, travertine

DRYTREAT
Excellence in sealing products™



Visit www.naturalstoneyard.ie for further information on our full range of cleaners & sealers.

Find us on
Facebook 18

Eccog gravel – Gravel Stabilisation System A Solid Permeable Gravel Stabiliser

This product is a unique gravel stabilisation system that transforms loose gravel driveways and access areas into a firm gravel surface. The gravel stabiliser provides an excellent low maintenance finish that is ideal, not just for cars & bicycles but also for disabled, wheelchair & pushchair access to private, public & commercial premises.

The Product: The base sheet of polypropylene honeycomb is filled with gravel to achieve a stabilised gravel surface. With an appropriate sub-base, this system will support vehicles weighing up to 100 tonnes.

The Benefits:

- The ability to use rounded or angular gravels
- The option to use a gravel surface for disabled access or cycle paths
- Low maintenance
- Weed growth is inhibited
- Quick & easy to install
- No rutting, no sinking
- Free draining
- Durable & long lasting
- Quick and easy to install
- Environmentally friendly



Installation Of Eccog gravel Honeycomb Panels

Re; Driveway: Remove soil to a depth of approx 6 inches

Spread crushed stone hardcore to a depth of approx 4 inches

A good selected fill is important for the durability & Stability of the water permeable hardening

Compact with a whackerplate

The eccog gravel honeycomb panels are placed onto the selected fill

If needed you can cut the eccog gravel honeycomb panels into your desired shape

The decorative stone is placed up until 1-2cm above the panels & raked through

After the filling up of your decorative stone, your job is complete



Quartz Garden Walling

Our most sought after walling used within landscape projects.

Suitable for Garden Walls, Raised Flowerbed, Water Features, BBQs, Piers, Fireplaces, Houses etc.

Available in 2 colours : Grey or Gold/Brown Quartz Garden Walling.



Grey Quartz Garden Walling



Gold / Brown Quartz Garden Walling



Limestone Cut Stone



Limestone Cut Stone
Used At Entrance Walls



Shannon Sandstone Machine Block



Shannon Sandstone Machine Block
Used In Recent Project

INSTALLATION OF PAVING SLABS

www.naturalstoneyard.ie

Getting ready to lay your patio.

Materials you will need:

Hardcore 804 crushed stone

To create a firm base on which to build your patio

Cement

To mix with building sand to create mortar to set your paving.

Building Sand

To mix with cement to make mortar to lay slabs on.

Your selected choice of Natural Stone Paving.

Jointing Compound

To joint your paving to stop weeds growing between the slabs. Available in colours to match your paving.

Patio Sealer

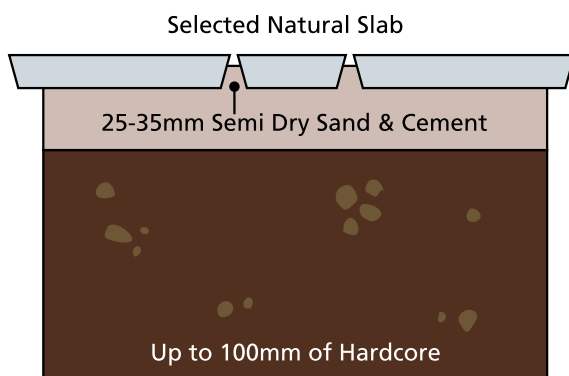
To protect your new patio from weathering and stains

Tools you will need:

- | | | |
|---|--|--|
| <input checked="" type="checkbox"/> Long tape measure | <input checked="" type="checkbox"/> Wooden marker pegs | <input checked="" type="checkbox"/> Cement mixer |
| <input checked="" type="checkbox"/> Builder's line | <input checked="" type="checkbox"/> Gloves | <input checked="" type="checkbox"/> Whacker plate |
| <input checked="" type="checkbox"/> Spirit level | <input checked="" type="checkbox"/> Safety goggles | <input checked="" type="checkbox"/> Angle grinder |
| <input checked="" type="checkbox"/> Spade | <input checked="" type="checkbox"/> Dust mask | <input checked="" type="checkbox"/> Brush |
| <input checked="" type="checkbox"/> Builder's trowel | <input checked="" type="checkbox"/> Rubber mallet | <input checked="" type="checkbox"/> Large paint brush/roller |

Ground Preparation:

1. Mark out the patio in its desired position using a long tape measure and spray marker paint. Remove vegetation from the marked area, and the topsoil to a depth of 200mm. Hammer in wooden pegs so their tops mark the top of the finished base. If the patio joins a house its level should be at least 150mm below the damp proof course. Use a spirit level to ensure the pegs are level across the width of the patio but allow a 1 in 100 fall away from the house to enable rainwater to run off.
2. Tip in a layer of hardcore so it reaches the top of the pegs, rake roughly level and then use a whacker plate (which can be hired). If required top up the hardcore and compact again so it reaches just below the top of the pegs.



INSTALLATION OF PAVING SLABS

www.naturalstoneyard.ie

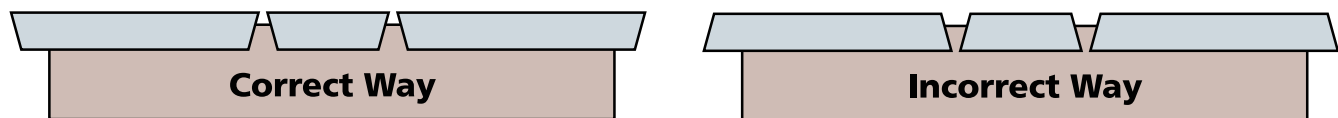
Ground Preparation

Preparing the ground for paving depends upon the site conditions and the intended use of the paved area. If your ground is firm you probably only need to remove the turf and topsoil to a depth to accommodate 30-40mm for the slab & mortar thickness.

If the subsoil is wet or spongy you need to dig out much deeper to put in a stabilising layer (approx. 100mm) of well compacted hardcore again allowing 30-40mm for the slab and mortar thickness. In reality few areas are already level enough for immediate paving, so some areas need to be excavated whilst others need to be made up with the compacted hardcore. The use of hardcore helps ensure adequate site drainage, which is a prerequisite for paved areas.

Which way up?

There seems to be some confusion about the way you lay Natural Stone, please see the diagrams below for advice.



Selection

We recommend that whenever laying Natural Stone you should mix your paving from 3-4 different packs (where possible) as you lay the patio. This will allow the colours to blend and help to improve any shade variations that may occur between packs, giving your patio a more natural look.

Laying

We recommend laying a constant mortar bed to set paving on. This provides a stronger base and also allows for the variation in thickness of natural stone paving. Mix cement, building sand and spread enough on the base to lay 1 or 2 slabs at a time. Ensure that you check all of the levels and falls during the laying process, you should do this by using a spirit level. This will enable you to have a nice level patio and Do Not Walk on the paving for at least 24 hours.

Cutting

If your patio involves a lot of cutting we would advise that you hire a powered cutting tool with a diamond tipped blade (any hire shop will advise you of the machine and blade you will need if you advise them of what you are intending to do). Please take care and also make sure that your hire shop issues you with full instructions and relevant safety equipment including goggles.

Pointing

there are several methods and products on the market to help with the pointing of paving products. Air reacting pointing products that can be found in most builders merchants or patio centres, the old fashioned cement and mortar mix.

The joints should be pointed as soon as possible but not if rain or snow are forecast. As with all natural stone products, we recommend that paving is laid allowing for a minimum 10-15mm joint. We recommend joints are pointed using a wet (but not sloppy) cement mortar mix to produce a more permanent waterproof finish. Do not leave the joints unpointed for more than a couple of days. You must not attempt to brush the mix across the surfaces of the slabs as any cement left on the slab will result in unsightly staining and will often mean a complete renewal of products.

Natural Stone Yard cannot accept any responsibility for any mortar staining, cutting or problems during the laying of their **natural stone paving**.

Our 20mm Premium Italian Porcelain tiles with rectified sides and corners can be installed quickly and precisely.

Installation

As with natural stone paving, a well compacted layer of hardcore is needed, unless the Porcelain tile is going directly onto concrete. We would recommend a full bed of mortar (sand & cement mix) to lay the Porcelain tiles on.

If your Porcelain tile is going onto a concrete base we would recommend using Botament Multistone Adhesive. In conjunction with this you should also use Botament D11 a primer for the underside of the Porcelain tile.

Cutting

All cutting of the Porcelain tiles should be done with a good quality diamond tipped blade. Cutting is more difficult with Porcelain tiles than natural stone but with the right equipment/tools and patience you can carry this out.

Jointing

To joint the Porcelain tiles we would recommend Botament Multifuge Base Or Ultrascap Flowpoint Smooth Grout. Both ideal for joints from 3-15mm.

Benefits of Porcelain Paving Tile



LOW MAINTENANCE



EXACT PROFILE THICKNESS



SLIP RESISTANT



FROST PROOF



SCRATCH RESISTANT

Please note the following:

Advisable to create gradients during levelling/compacting to ensure optimal drainage of the floor

Advisable to lay the tiles with a minimum joint of 3mm

Advisable if laying in staggered format use a 1/3 offset pattern instead of a 1/2 offset pattern

Any query on any of above please ask our sales team

Products mentioned above all available from Natural Stone Yard

GENERAL INFORMATION, TERMS & CONDITIONS

www.naturalstoneyard.ie

Please take time to read the following carefully before placing an order.

COLOUR:

Whilst the colours reproduced in this brochure are as accurate as photographic and printing process allow, it is essential your choice of goods are made from the actual material. Stone is a natural material with inherent variations in colour, tonal markings and surface textures. These inherent variations cannot be controlled nor precise shade of the stone guaranteed. Therefore all displays and pictures are intended as guides only.

ORDERING:

We strongly recommend you measure your area for paving precisely as we cannot accept excess quantities of over ordered materials. We often find that the dimensions used for the initial project are significantly changed on site. If in doubt underestimate.

TERMS OF PAYMENT

Natural Stone Yards terms of payment are strictly cash before supply of goods- non-negotiable. Please do not ask for credit as refusal often offends. Ownership of goods does not pass until paid for in full. We regret we do not accept cheques of any description as a form of payment.

RE-SALE

If you purchase our materials for the purpose of re-sale in the course of trade, you must not make representations or give guarantees to your customer more extensive than those made or given by us.

QUOTATIONS:

Our quotation is open for acceptance by you by placing an order within 14 days of the date of the quote or such longer period as we may agree. The price quoted on our quotation relates only to such materials as are stated therein.

RETURNED PRODUCTS:

Natural Stone Yard do not accept returns on any materials ie. (Paving, Chippings, Grout, Kerbs, Building Stone, Cobbles etc) Natural Stone Yard do not accept excess quantities of over ordered materials or where a customer simply changes their mind. Non-Negotiable.

Natural Stone Yard would recommend for you to accurately measure on site before ordering materials, if in doubt underestimate. We often find that dimensions used for the initial project are significantly changed on site.

NOTE: MEASURE TWICE, ORDER ONCE, NO RETURNS. *This does not affect your statutory rights as a consumer.*

AFTERCARE - SEALING & PROTECTING

To keep your patio looking its best we recommend that you protect your investment with our range of sealers. Our sealers offer all round protection without changing the colour or texture of the surface. Our sealers protect surfaces from weathering and helps keep them cleaner by resisting dirt, algae, grease etc. Ideal for use on driveways, patios and pathways.

We also stock a large range of specialised cleaners to maintain your patio. We have specialised cleaners to remove algae, moss, lichen, black spot, oil/grease, cement, rust, efflorescence and more. Cleaners for all types of stone eg. sandstone, granite, limestone.

Disclaimer: The above information serves as a guideline only. Natural Stone Yard does not accept responsibility for damage or colour fading caused of cleaning or detergent chemicals when used on paving products

Please visit our website www.naturalstoneyard.ie or contact us for more information on our comprehensive range of sealers and cleaners.

ACCEPTANCE:

Installation is viewed as acceptance of goods supplied, hence any claim after installation cannot be accepted.

COMPLAINTS:

All orders delivered must be examined immediately. As any shortages, damages or discrepancies must be reported to our driver before he leaves the site. We cannot be held responsible for care of the stone after delivery. If you have a complaint please contact the sales office immediately.

EFFLORESCENCE:

We cannot take responsibility for the occurrence of efflorescence which may appear in the form of a deposit and or apparent colour fading like chalky patches. This natural effect comes from a high cement content and occurs when prolonged wet weather is followed by conditions of rapid drying. The appearance of efflorescence gradually disappears over time as natural weathering takes place; efflorescence is slowly washed away by rain. Efflorescence will in no way affect the durability of your natural stone material.

WASTE:

We are not responsible for the collection/removal of empty crates/packaging from which our goods were supplied in. However you may wish to return empty crates to our depot during business hours to a designated area provided that they are not broken up and are reusable. If the crates are unfit for reuse or contain debris/rubbish of any description they will not be accepted back. You must organise transport to return empty crates back to our yard.

CONTRACTORS:

We, Natural Stone Yard do not pave nor do we have any paving contractors employed, whilst we try our best to recommend quality contractors we cannot be responsible for their actions as they are self employed. A list of recommended contractors are available on request from our office and are available on our website.

QUALITY SYSTEMS:

Our stone suppliers are registered BS EN ISO 9001:2000

DISCLAIMER:

Natural Stone Yard tries to ensure that any advice, recommendation or information it may give is accurate. No liability of any kind is accepted by Natural Stone Yard or its servants. (Including liability for negligence)

DISPLAYS:

Large outdoor display areas at Natural Stone Yard, Bullstown, The Ward, Co. Dublin.

Natural Stone Yard highly recommend for you to choose a registered paving contractor to carry out your paving requirements



Natural Stone Yard

Our Comprehensive Display Areas



Directions:

Located approx. 10 mins from Exit 5 of the M50.

At M50 Intersection take the N2 Motorway.
Take Exit 3 for Ashbourne/Ratoath off
N2 Motorway.
At roundabout take 4th Exit for R135, Coolquay.

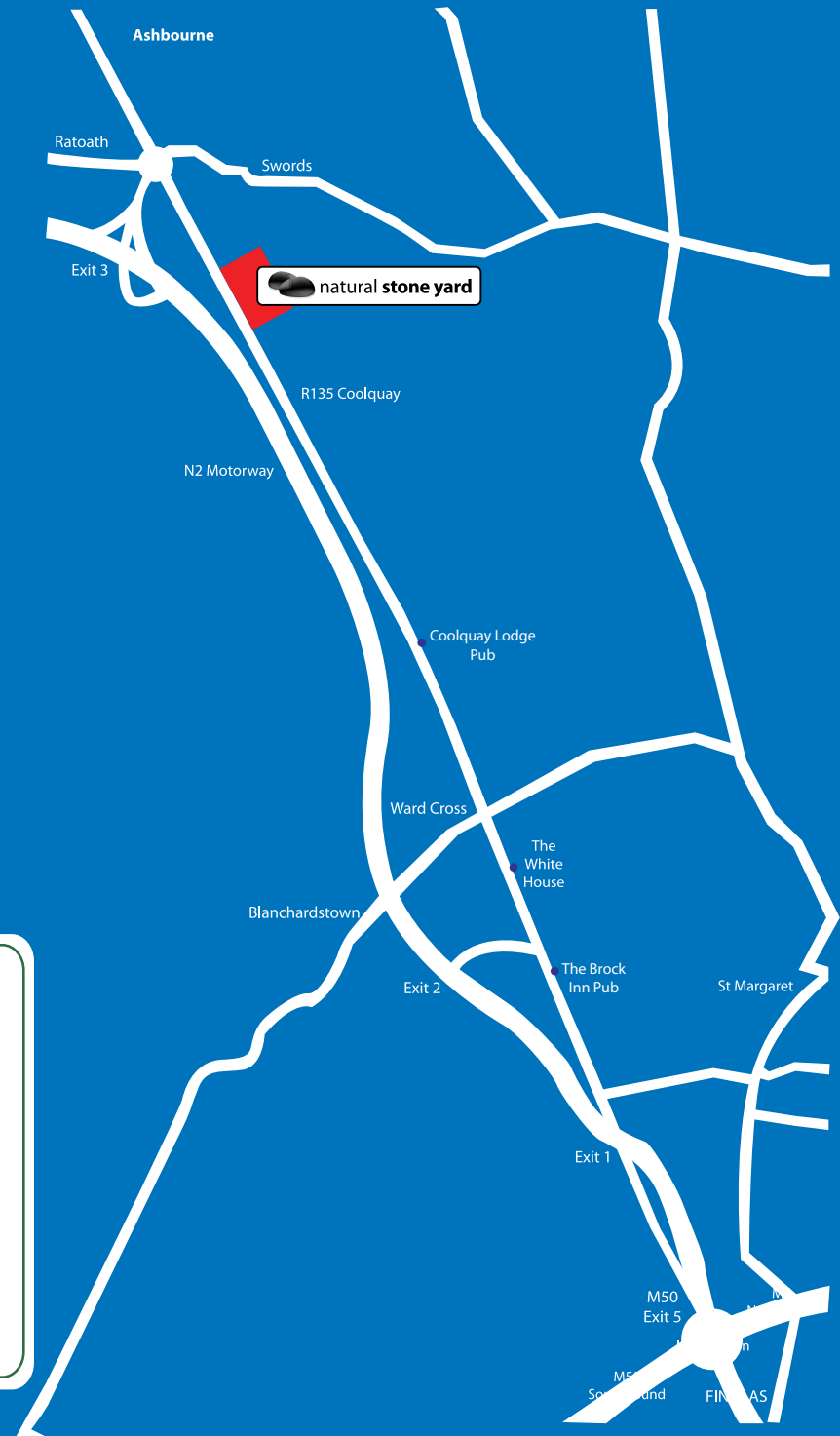
We are located approx. 1.5km on left
hand side.

Sat Nav Coordinates:

N 53 29.043

W 6 22.364

Eircode D11 XK03



Opening Hours:

Mon-Fri: 8am-5.00pm Closed Bank Holiday Weekends
Open Saturdays during summer months 9am -1pm

Please check for opening hours during winter months.



Mob: 086 8234739 / 086 0443982 Web: www.naturalstoneyard.ie